



Wiley Park Public School

Denman Avenue
Wiley Park NSW 2195
PH: 9750 0144
Email: wileypark-p.school@det.nsw.edu.au

Dear Parents,

As of Week 2 our teachers will be engaging with our students through Google Classroom. This is an opportunity for teachers to check in on students and support them with their home learning tasks.

Please find below the daily timetable for Google Classroom.

9:00-10:00am – Years 5 and 6
10:00-11:00am – Years 3 and 4
11:35-12:00pm – Kindergarten
12:00-12:45pm – Year 1 and Year 2
2:00-2:30pm – Year 3, Year 4, Year 5 and Year 6
2:30-3:00pm – Kindergarten, Year 1 and Year 2

Please find below instructions on how to access Google Classroom.

Should students in K-2 not know their Student Portal password, parents can call the office on **9750 0144 or 9750 0223** for their child's username and password. Students in Stages 2-3 should know how to access their Google Classroom.

Classroom teachers will be regularly contacting families by phone to check in on student progress. Teachers may be using their own phones but will have them on **private number**. Please consider this when receiving calls from a private number.

If students are working on-line or using the hard copy picked up from the office, they will be marked as "present". Additionally, if you are keeping your child/ren at home, please contact the school by phone weekly.

We thank you for your support during this time.

Regards,

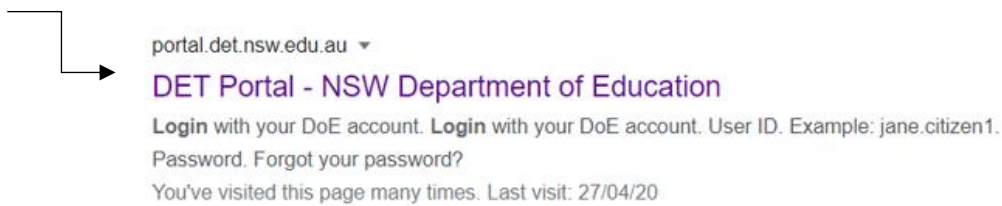
Mrs Demos

Principal

Step 1: Google search “student portal”



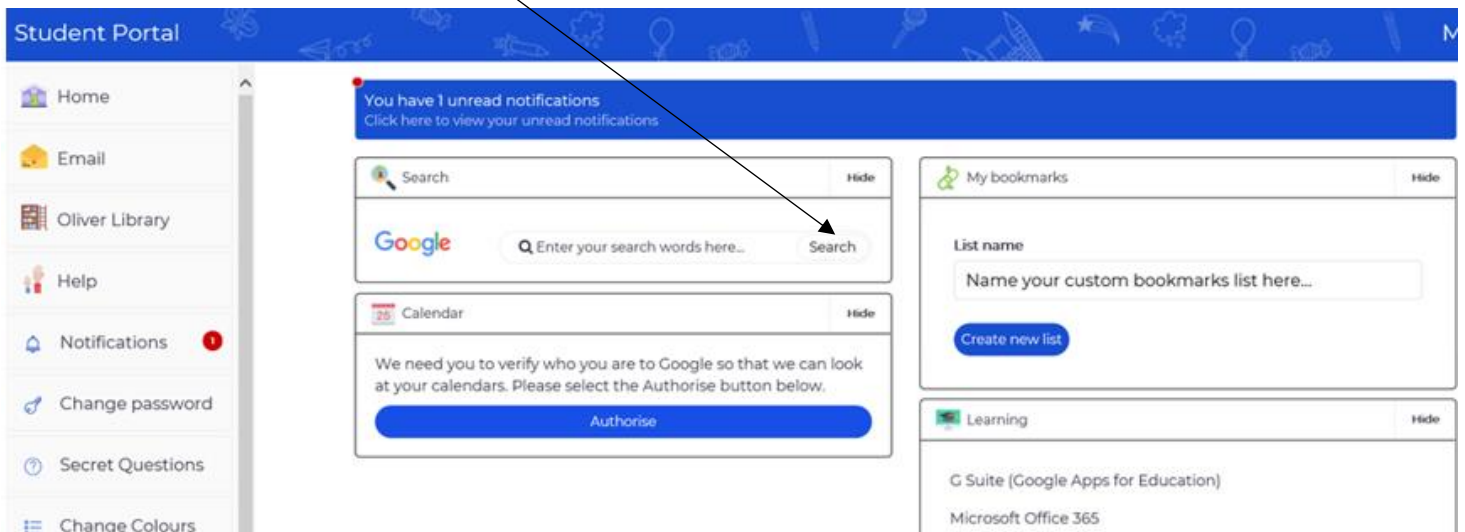
Step 2: Click on the first link:



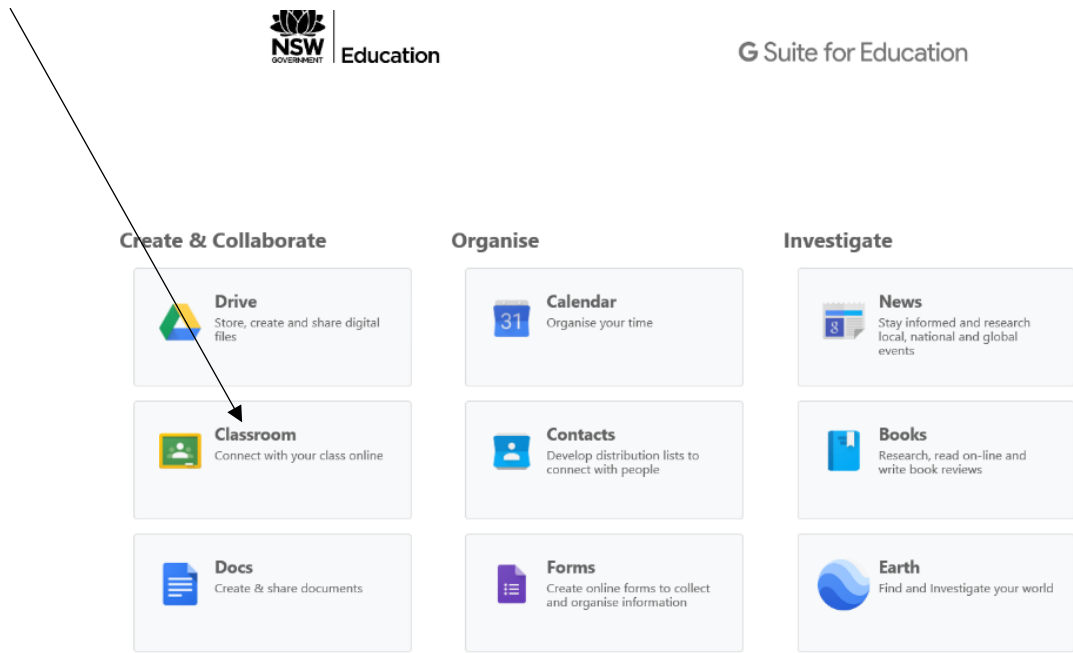
Enter your login details

A screenshot of the login form. The title is "Login with your DoE account". There are two input fields: "User ID" with the placeholder text "Enter your user ID" and "Example: jane.citizen1", and "Password" with the placeholder text "Enter your password". Below the input fields is a blue "Log in" button and a link "Forgot your password?". Two arrows point from the text "Enter your login details" to the User ID and Password input fields.

Step 3: In your student portal find “G Suite (Google Apps for Education)” and click on it.



Step 4: In here click on “Classroom”



Step 5: Now find your current classroom and click on it. In here is where you will be able to communicate with you teacher for home learning.

